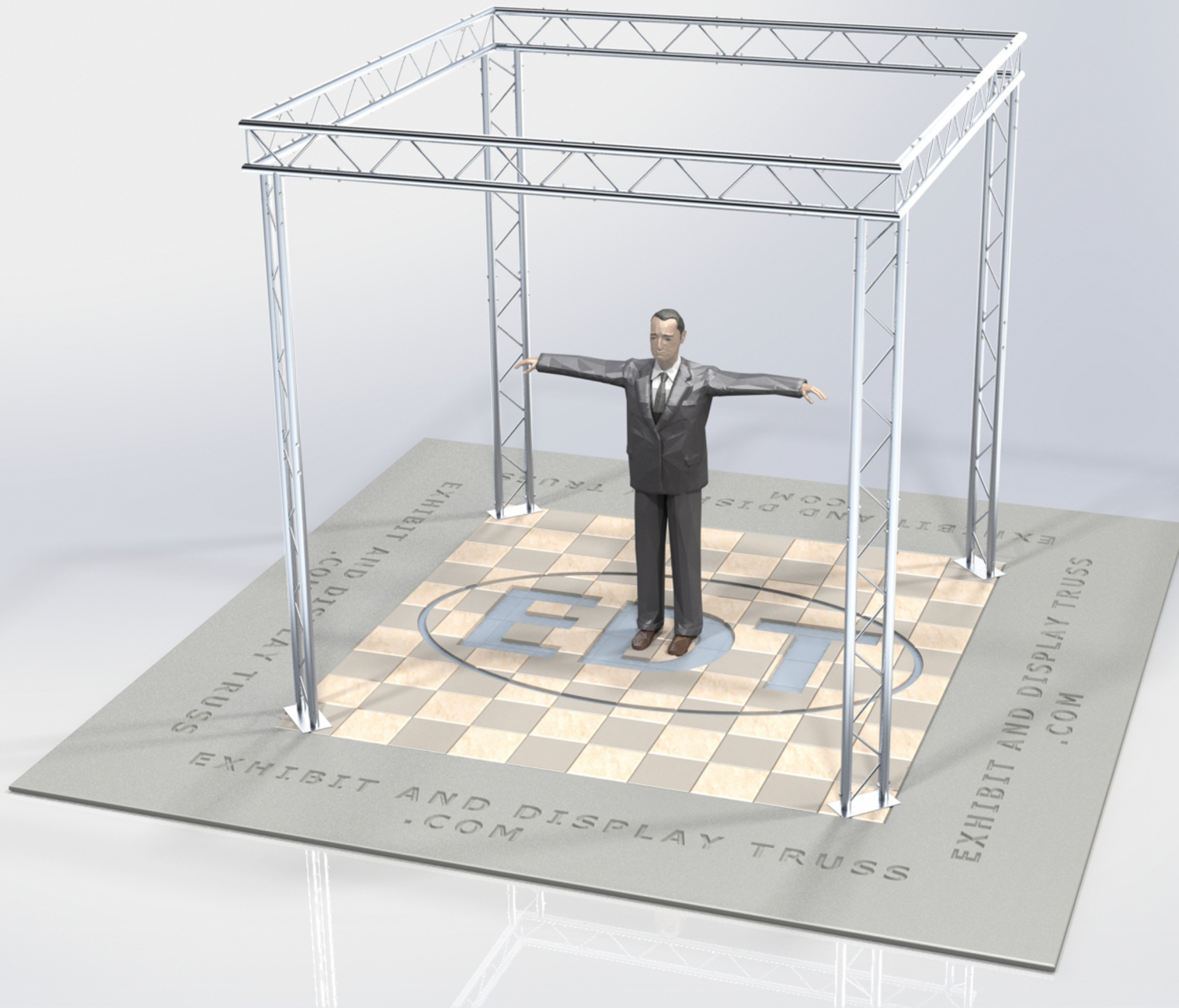


**KIT: A21-102**

**10" Wide Aluminum Truss. 2" Chords with 1/2" Webs**

©2015 EXHIBIT AND DISPLAY TRUSS.COM



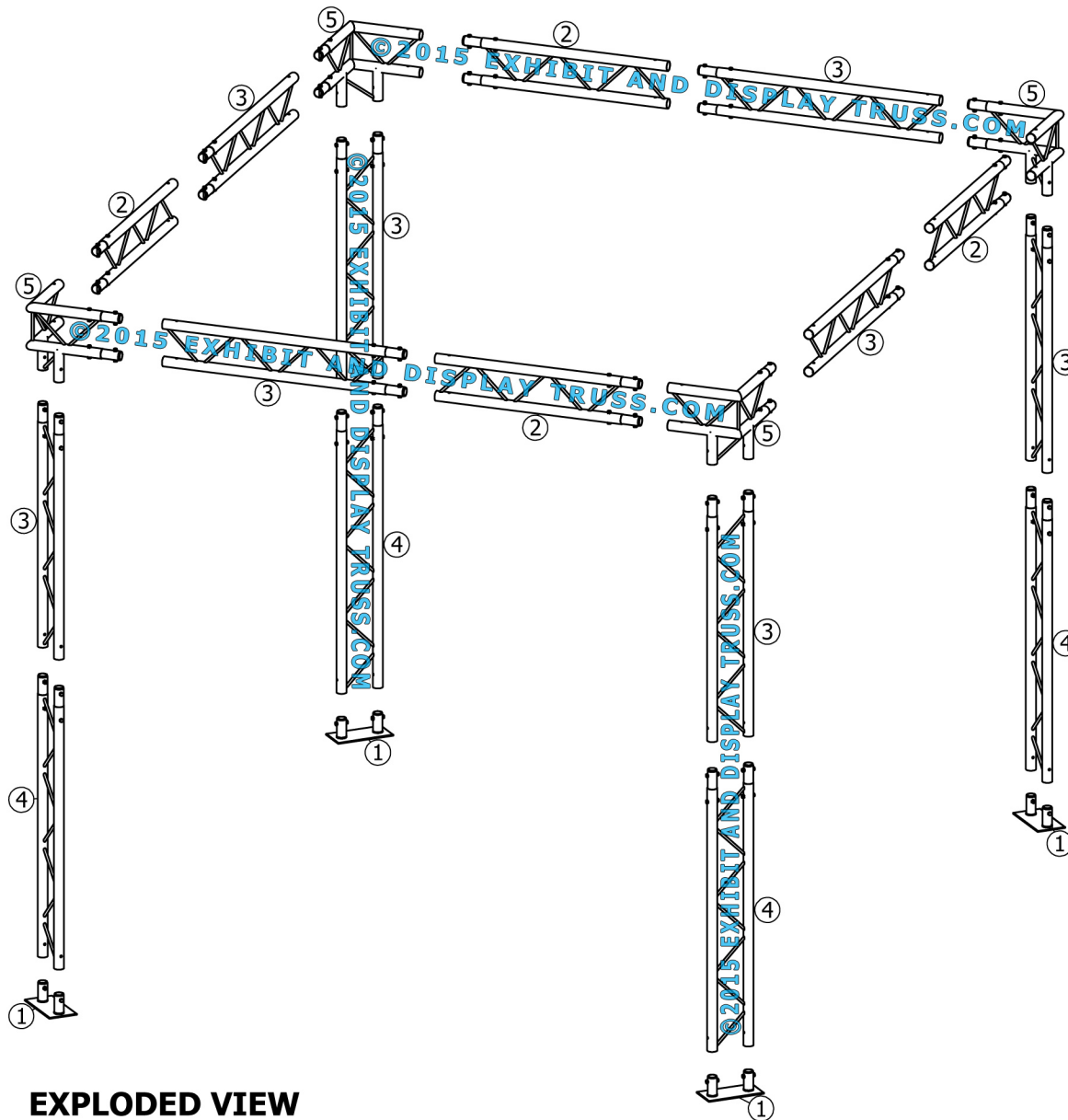
**Toll Free: 855-323-4866**  
**Email: [info@exhibitanddisplaytruss.com](mailto:info@exhibitanddisplaytruss.com)**

**[ExhibitAndDisplayTruss.com](http://ExhibitAndDisplayTruss.com)**

# KIT: A21-102

10" Wide Aluminum Truss. 2" Chords with 1/2" Webs

©2015 EXHIBIT AND DISPLAY TRUSS.COM



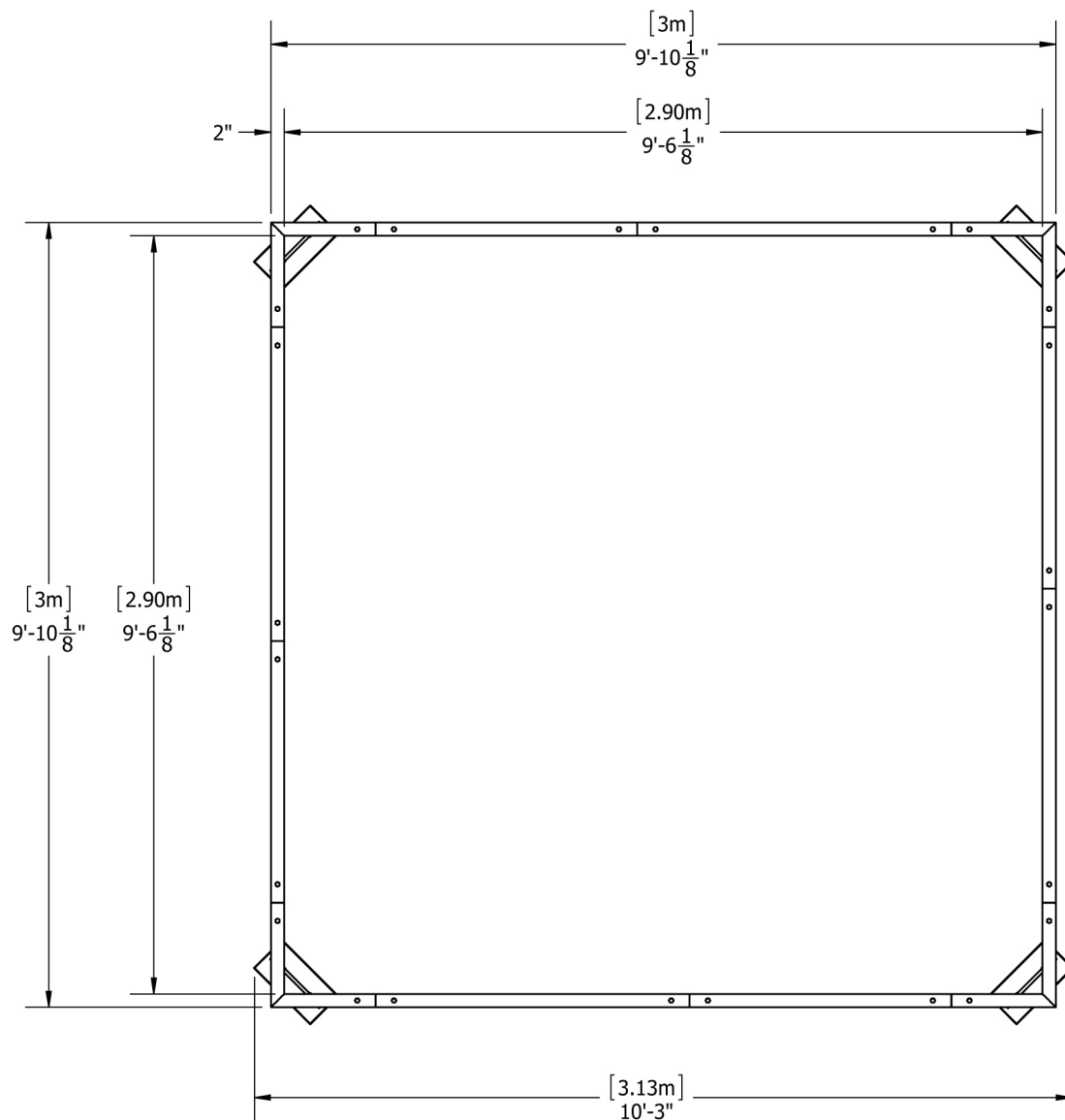
**EXPLODED VIEW**

ITEM NO.	PART NUMBER	DESCRIPTION	QTY.
①	EDT10-BP2	Ladder Base Plate	4
②	EDT10-L1.0	1.0m Ladder Truss	4
③	EDT10-L1.2	1.2m Ladder Truss	8
④	EDT10-L1.4	1.4m Ladder Truss	4
⑤	EDT10-L3W90V	3 Way 90° Junction Vertical	4

# KIT: A21-102

10" Wide Aluminum Truss. 2" Chords with 1/2" Webs

©2015 EXHIBIT AND DISPLAY TRUSS.COM

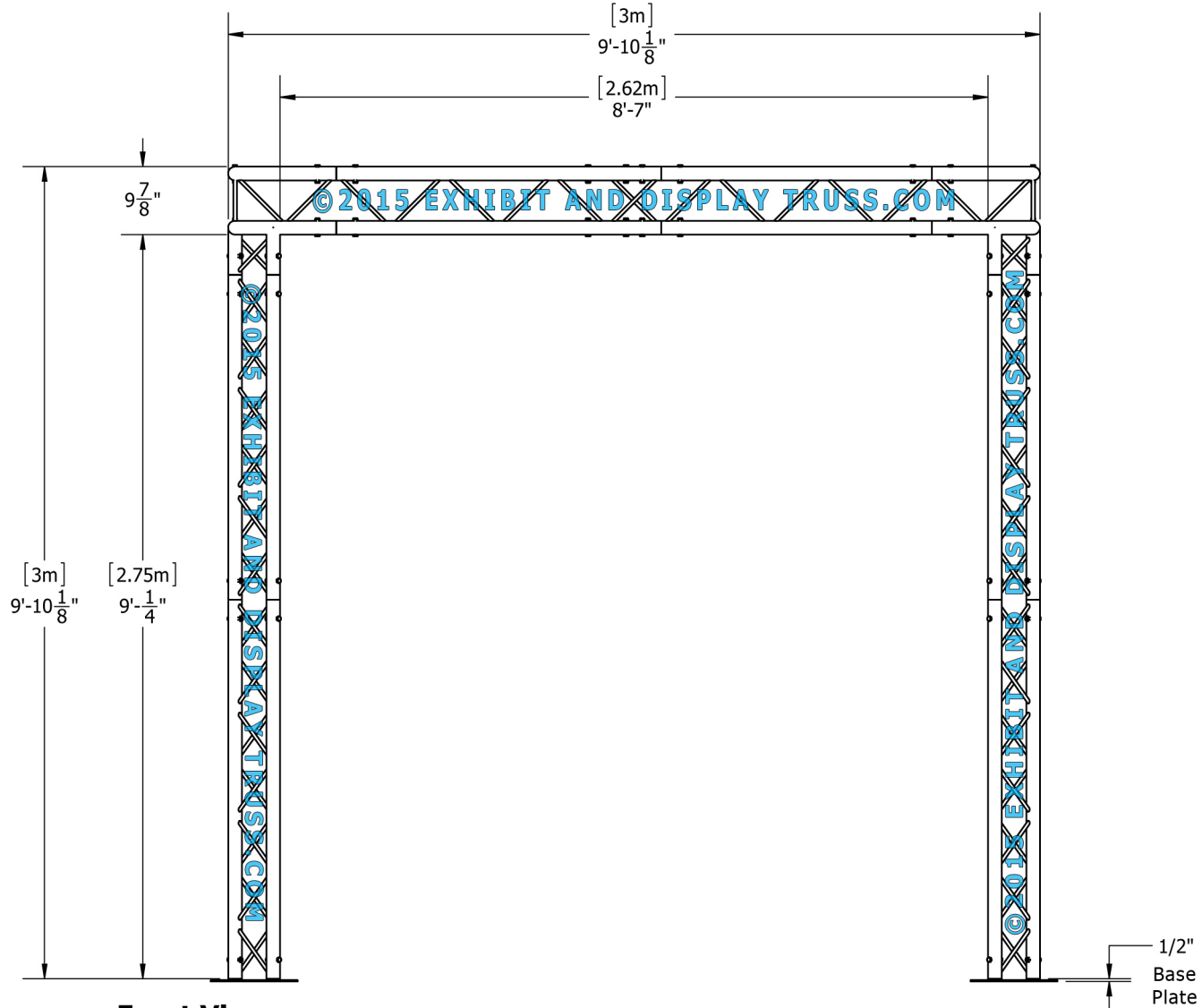


Top View  
Units: Feet & Inches  
[Meters]

# KIT: A21-102

10" Wide Aluminum Truss. 2" Chords with 1/2" Webs

©2015 EXHIBIT AND DISPLAY TRUSS.COM



Front View  
Units: Feet & Inches  
[Meters]