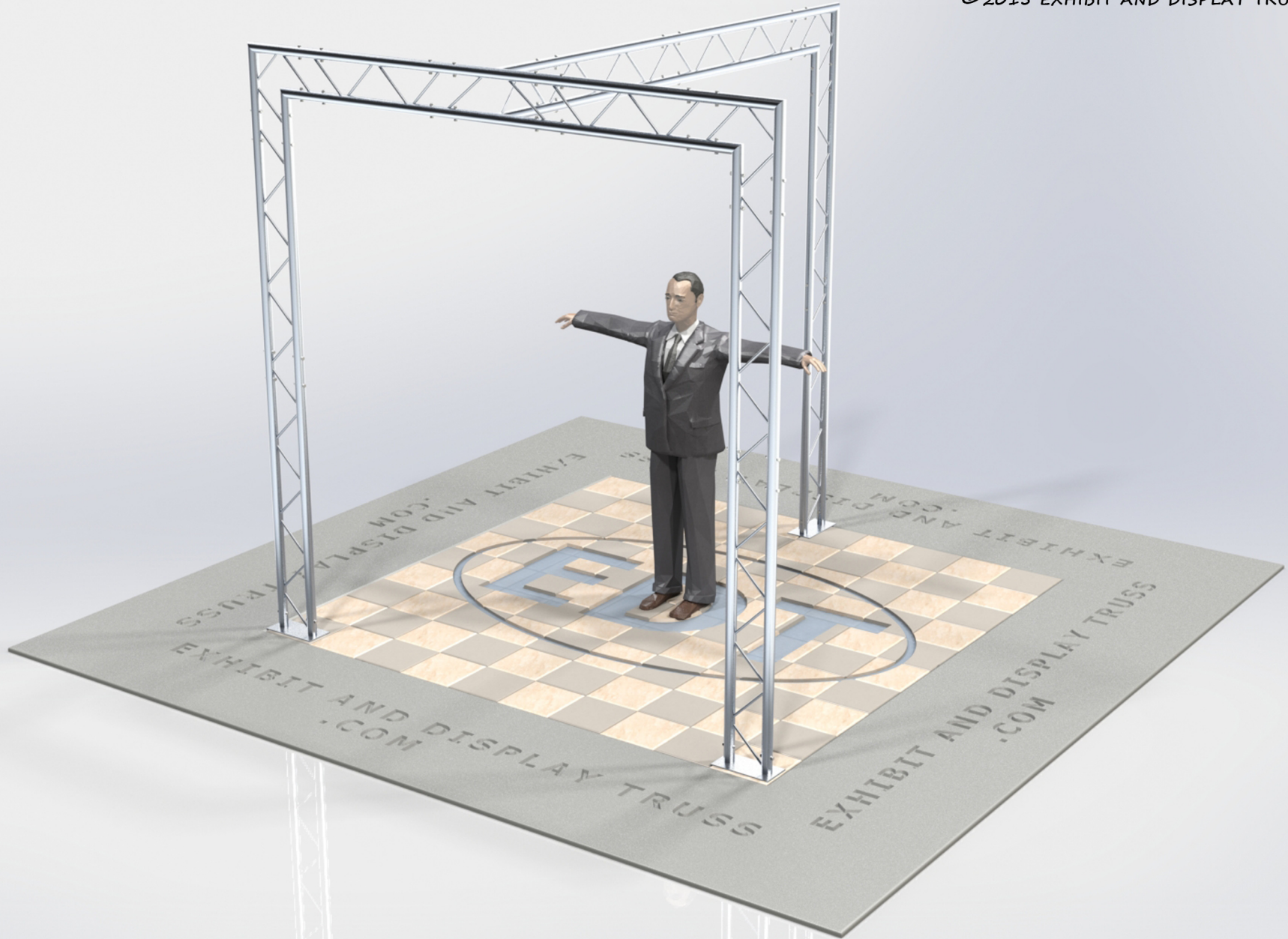


KIT: A26-102

10" Wide Aluminum Truss. 2" Chords with 1/2" Webs

©2015 EXHIBIT AND DISPLAY TRUSS.COM



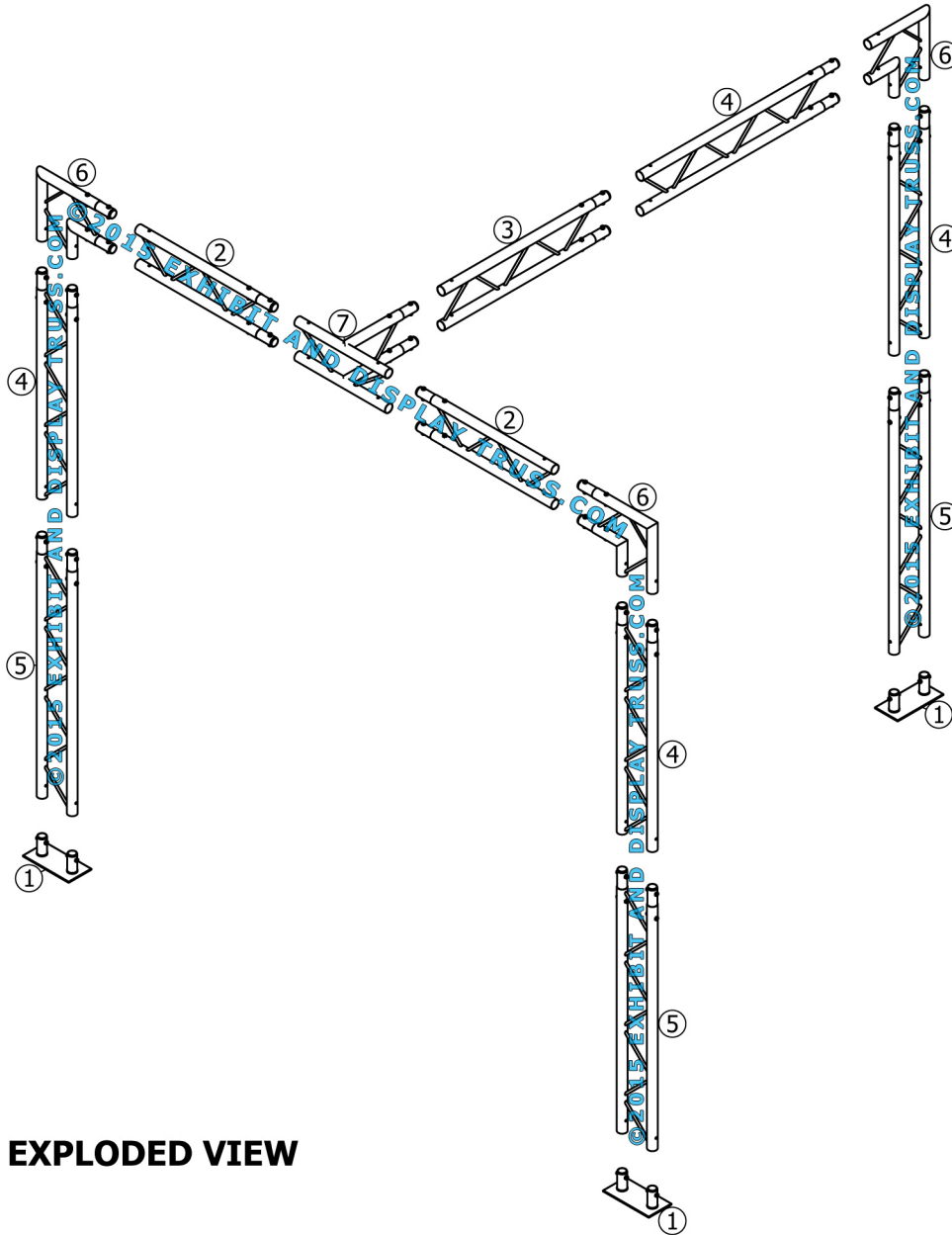
Toll Free: 855-323-4866
Email: info@exhibitanddisplaytruss.com

ExhibitAndDisplayTruss.com

KIT: A26-102

10" Wide Aluminum Truss. 2" Chords with 1/2" Webs

©2015 EXHIBIT AND DISPLAY TRUSS.COM



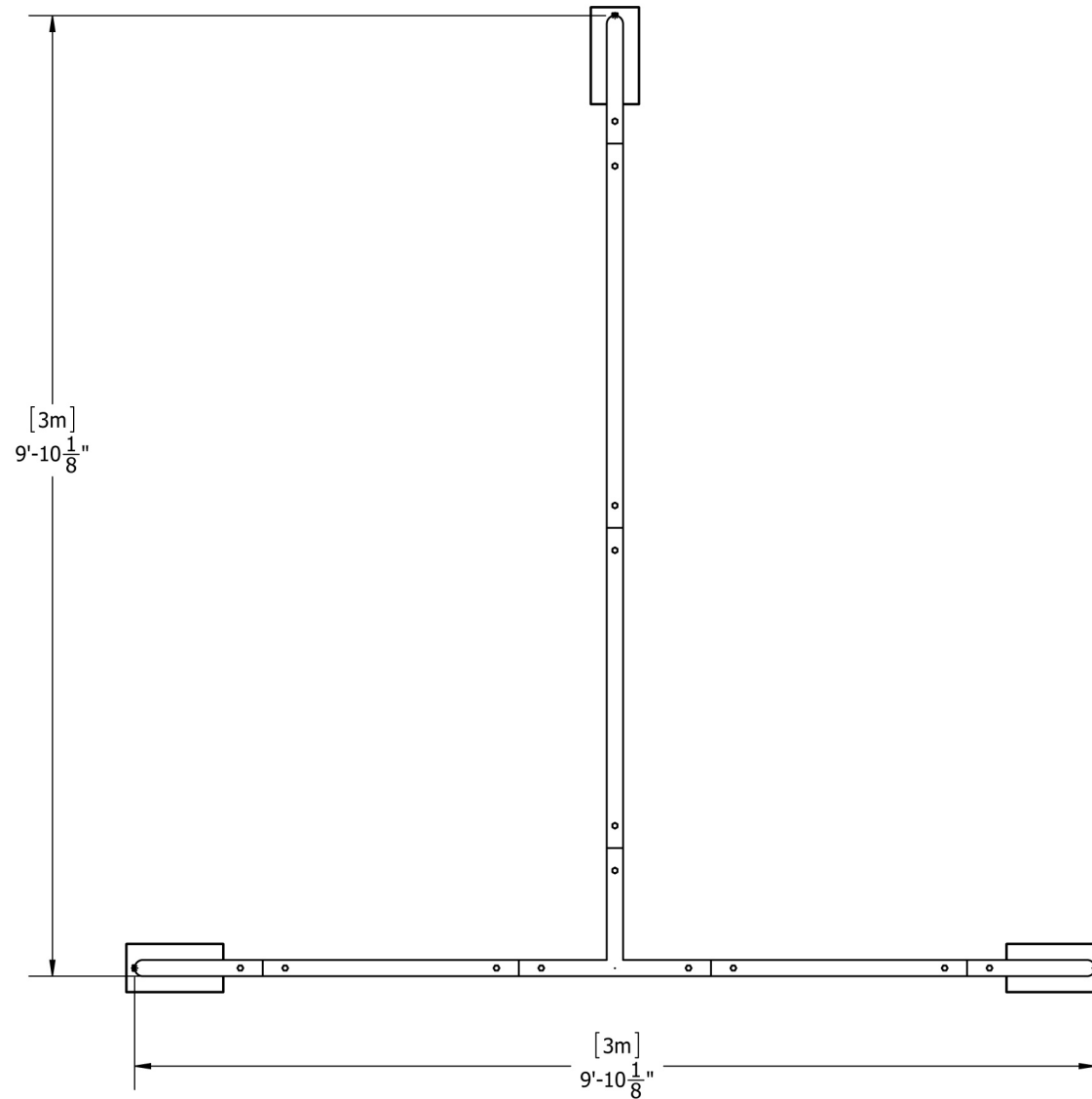
EXPLODED VIEW

ITEM NO.	PART NUMBER	DESCRIPTION	QTY.
①	EDT10-BP2	Ladder Base Plate	3
②	EDT10-L0.8	0.8m Ladder Truss	2
③	EDT10-L1.0	1.0m Ladder Truss	1
④	EDT10-L1.2	1.2m Ladder Truss	4
⑤	EDT10-L1.4	1.4m Ladder Truss	3
⑥	EDT10-L2W90H	2 Way 90° Junction Horizontal	3
⑦	EDT10-L3WTVc	3 Way 90° "T" Junction Vertical	1

KIT: A26-102

10" Wide Aluminum Truss. 2" Chords with 1/2" Webs

©2015 EXHIBIT AND DISPLAY TRUSS.COM

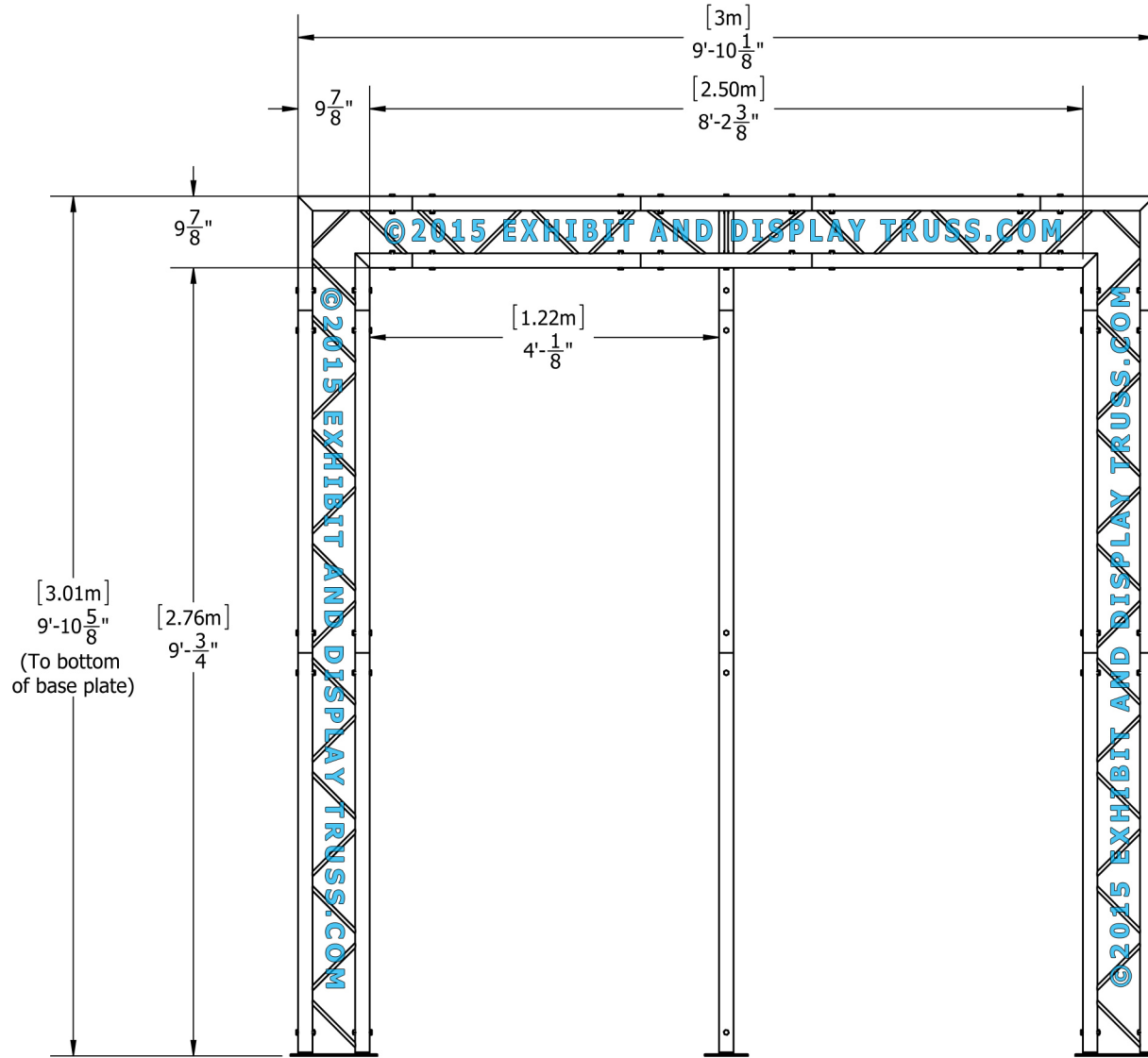


Top View
Units: Feet & Inches
[Meters]

KIT: A26-102

10" Wide Aluminum Truss. 2" Chords with 1/2" Webs

©2015 EXHIBIT AND DISPLAY TRUSS.COM

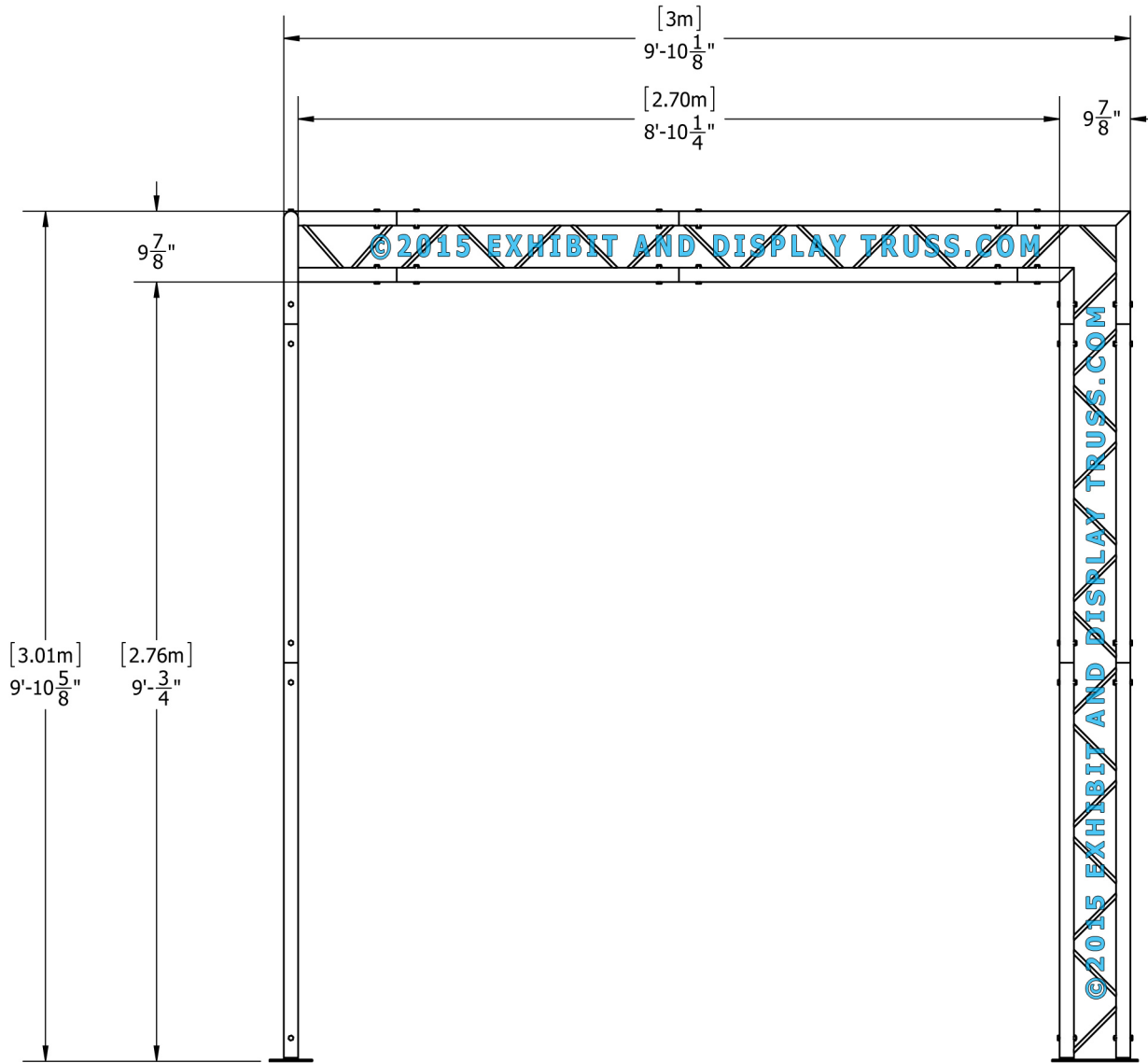


Front View
Units: Feet & Inches
[Meters]

KIT: A26-102

10" Wide Aluminum Truss. 2" Chords with 1/2" Webs

©2015 EXHIBIT AND DISPLAY TRUSS.COM



Side View
Units: Feet & Inches
[Meters]