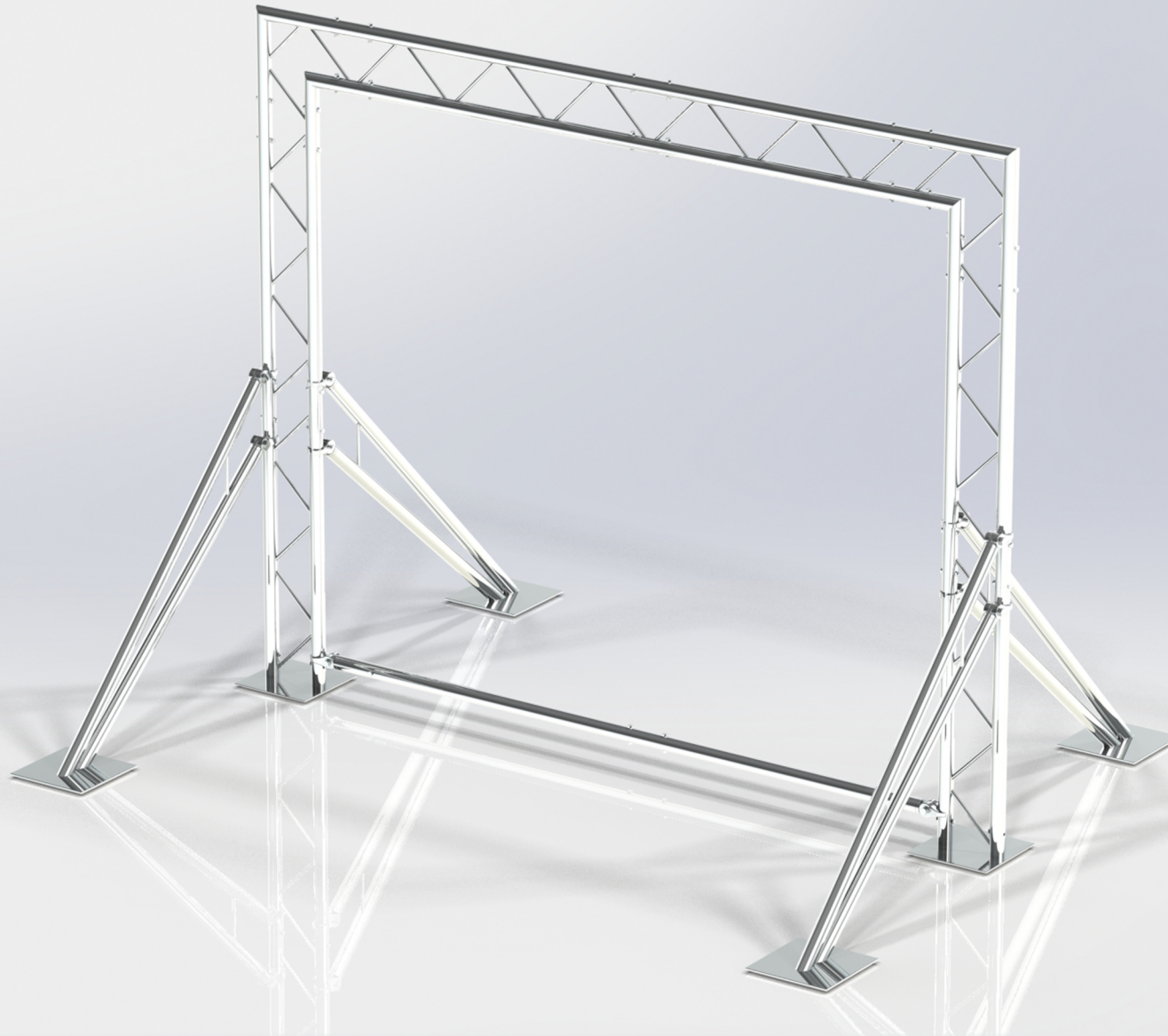


KIT: A53-102

10" Wide Aluminum Truss. 2" Chords with 1/2" Webs

©2021 EXHIBIT AND DISPLAY TRUSS.COM



© copyright
all rights reserved

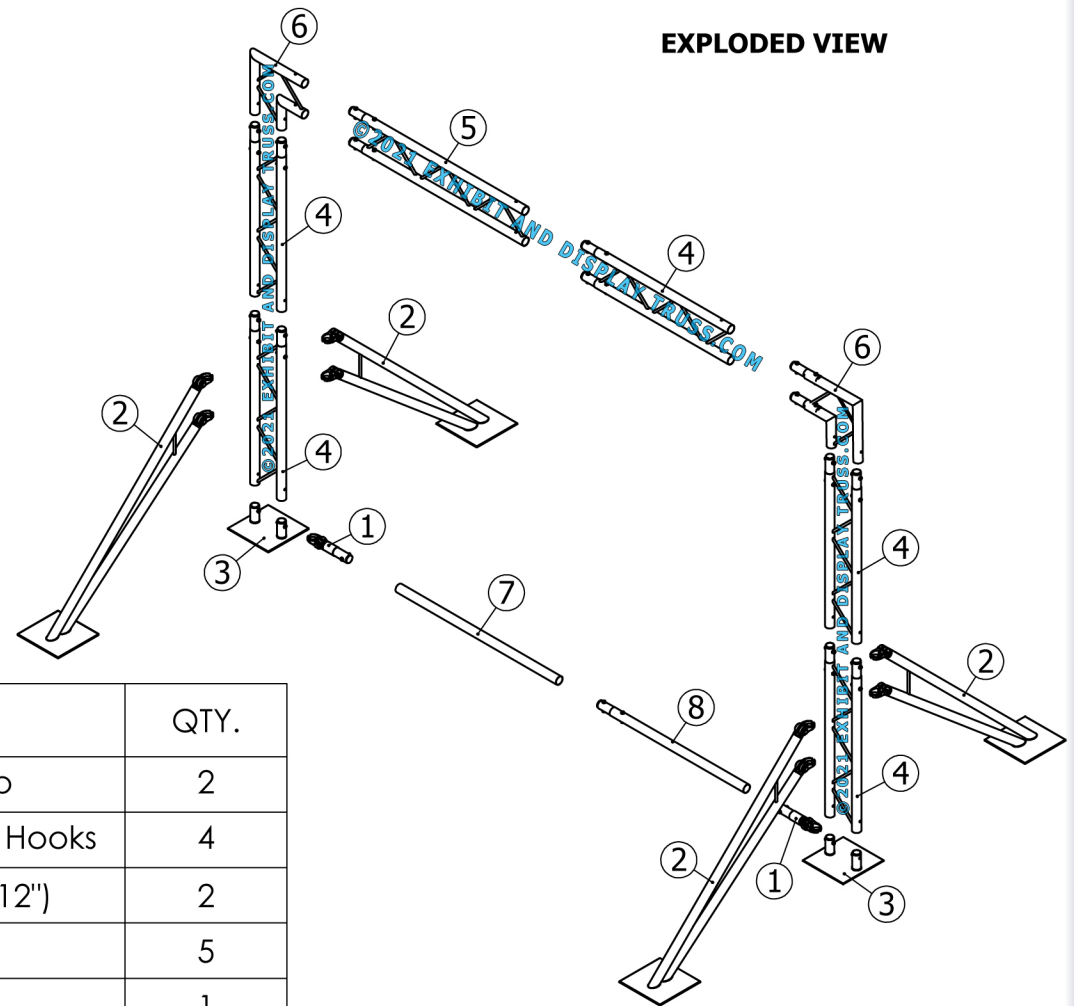
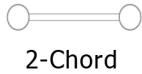
Toll Free: 855-323-4866
Email: info@exhibitanddisplaytruss.com

ExhibitAndDisplayTruss.com

KIT: A53-102

10" Wide Aluminum Truss. 2" Chords with 1/2" Webs

©2021 EXHIBIT AND DISPLAY TRUSS.COM



ITEM NO.	PART NUMBER	DESCRIPTION	QTY.
1	EDT10-EHC1	Extender Hook Clamp	2
2	EDT2-OR1	Outrigger Arms with Swivel Hooks	4
3	EDT10-BP2-12x12	Ladder Base Plate (12"x12")	2
4	EDT10-L1.0	1.0m Ladder Truss	5
5	EDT10-L1.2	1.2m Ladder Truss	1
6	EDT10-L2W90H	2 Way 90° Junction Horizontal	2
7	EDT2-ST1.2	1.2m Single Tube	1
8	EDT2-ST1.0	1.0m Single Tube	1

© copyright all rights reserved

Toll Free: 855-323-4866
Email: info@exhibitanddisplaytruss.com

ExhibitAndDisplayTruss.com

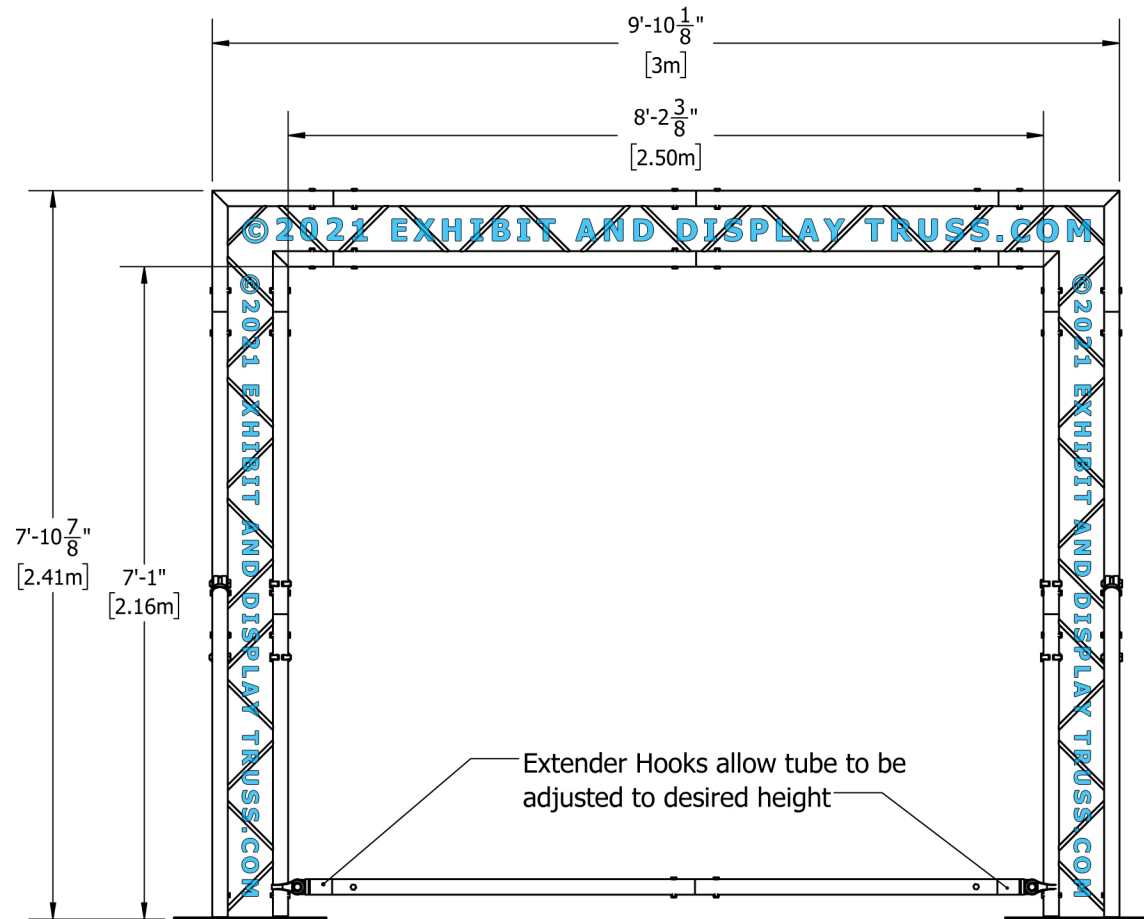
KIT: A53-102

10" Wide Aluminum Truss. 2" Chords with 1/2" Webs

©2021 EXHIBIT AND DISPLAY TRUSS.COM



2-Chord



Front View
Units: Feet & Inches
[Meters]

© copyright
all rights reserved

Toll Free: 855-323-4866
Email: info@exhibitanddisplaytruss.com

ExhibitAndDisplayTruss.com

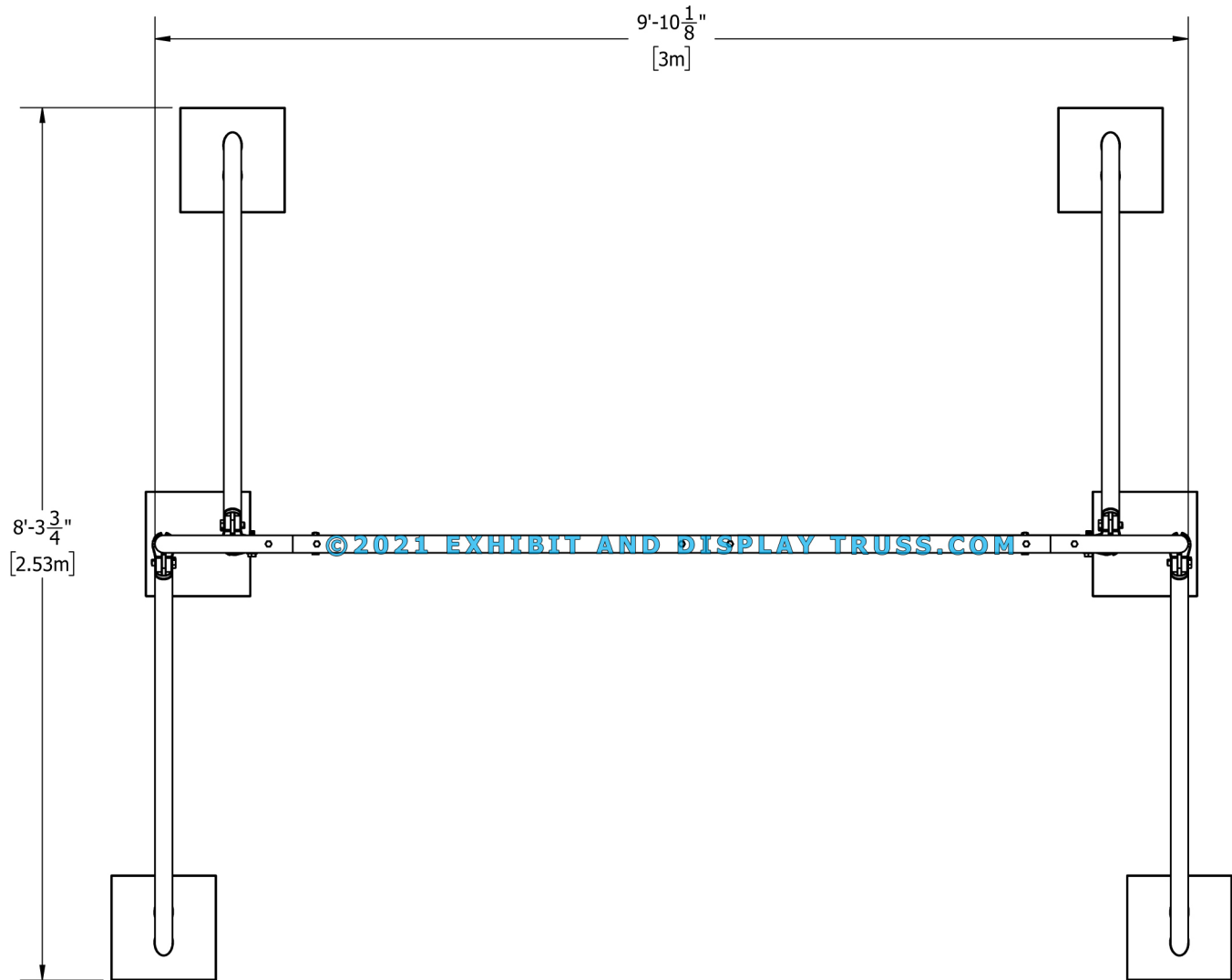
KIT: A53-102

10" Wide Aluminum Truss. 2" Chords with 1/2" Webs

©2021 EXHIBIT AND DISPLAY TRUSS.COM



2-Chord



Top View
Units: Feet & Inches
[Meters]

© copyright
all rights reserved

Toll Free: 855-323-4866
Email: info@exhibitanddisplaytruss.com

ExhibitAndDisplayTruss.com