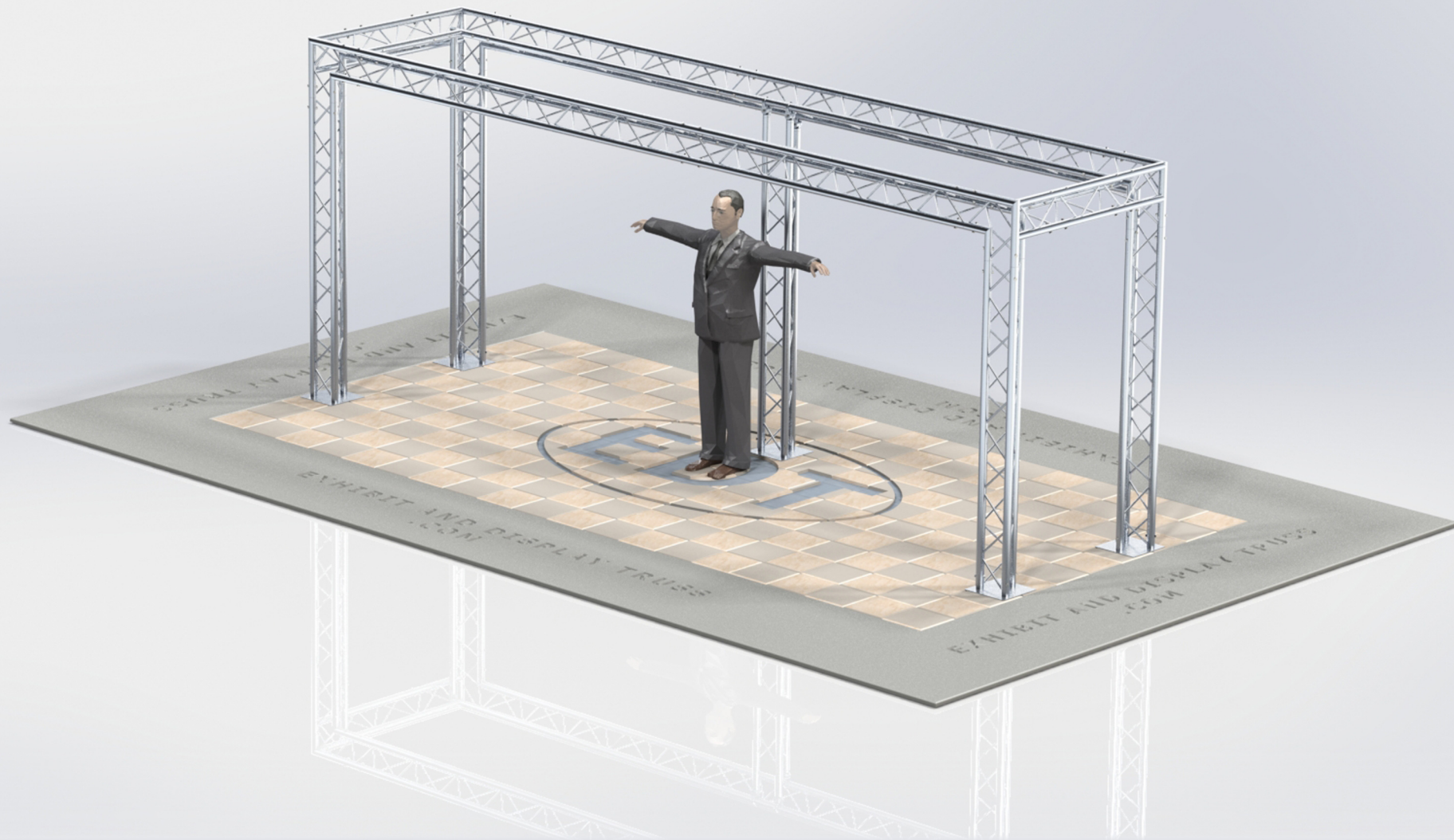


**KIT: B23-103**

**10" Wide Aluminum Truss. 2" Chords with 1/2" Webs**

©2015 EXHIBIT AND DISPLAY TRUSS.COM



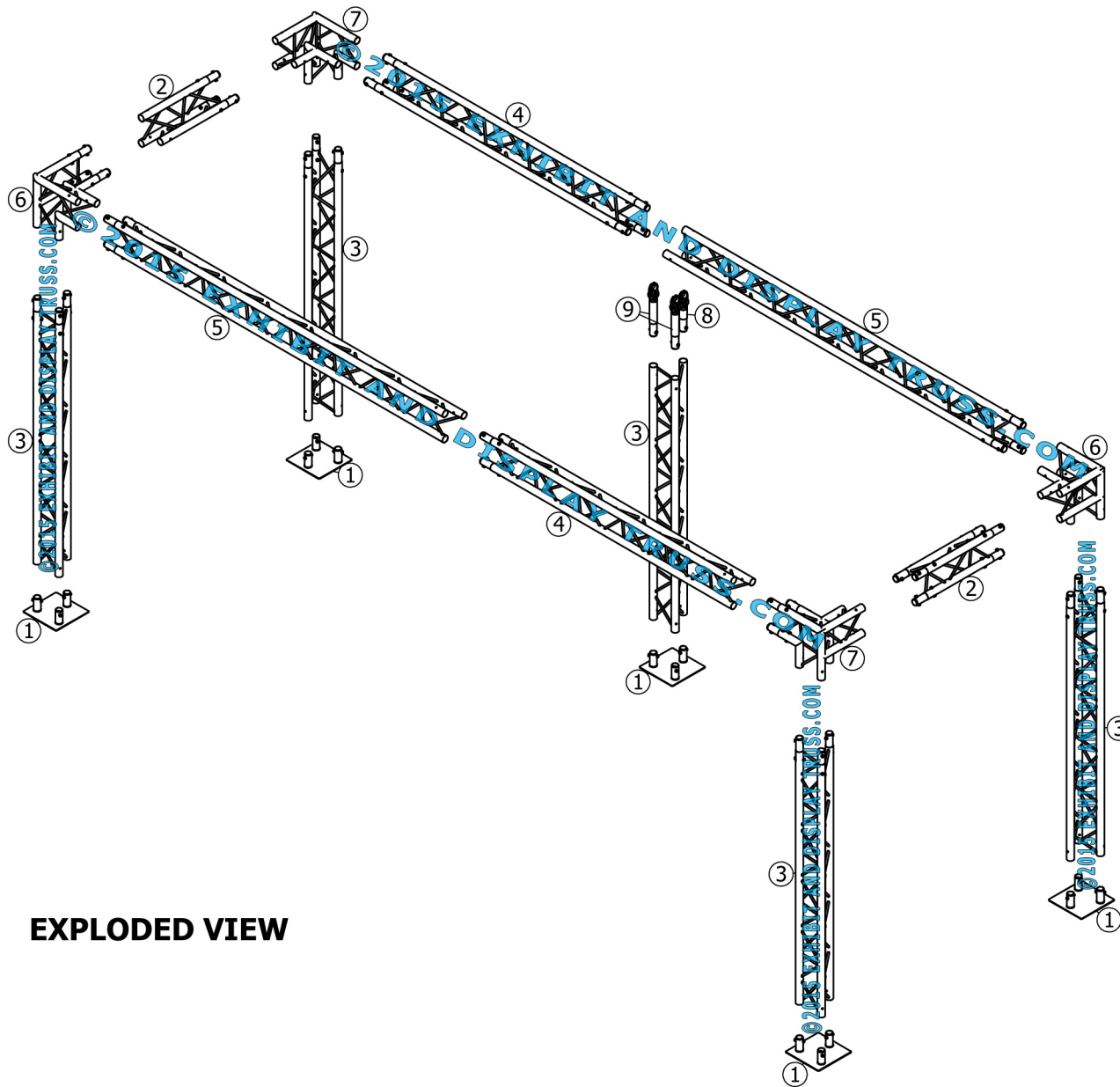
**Toll Free: 855-323-4866**  
**Email: [info@exhibitanddisplaytruss.com](mailto:info@exhibitanddisplaytruss.com)**

**[ExhibitAndDisplayTruss.com](http://ExhibitAndDisplayTruss.com)**

# KIT: B23-103

10" Wide Aluminum Truss. 2" Chords with 1/2" Webs

©2015 EXHIBIT AND DISPLAY TRUSS.COM



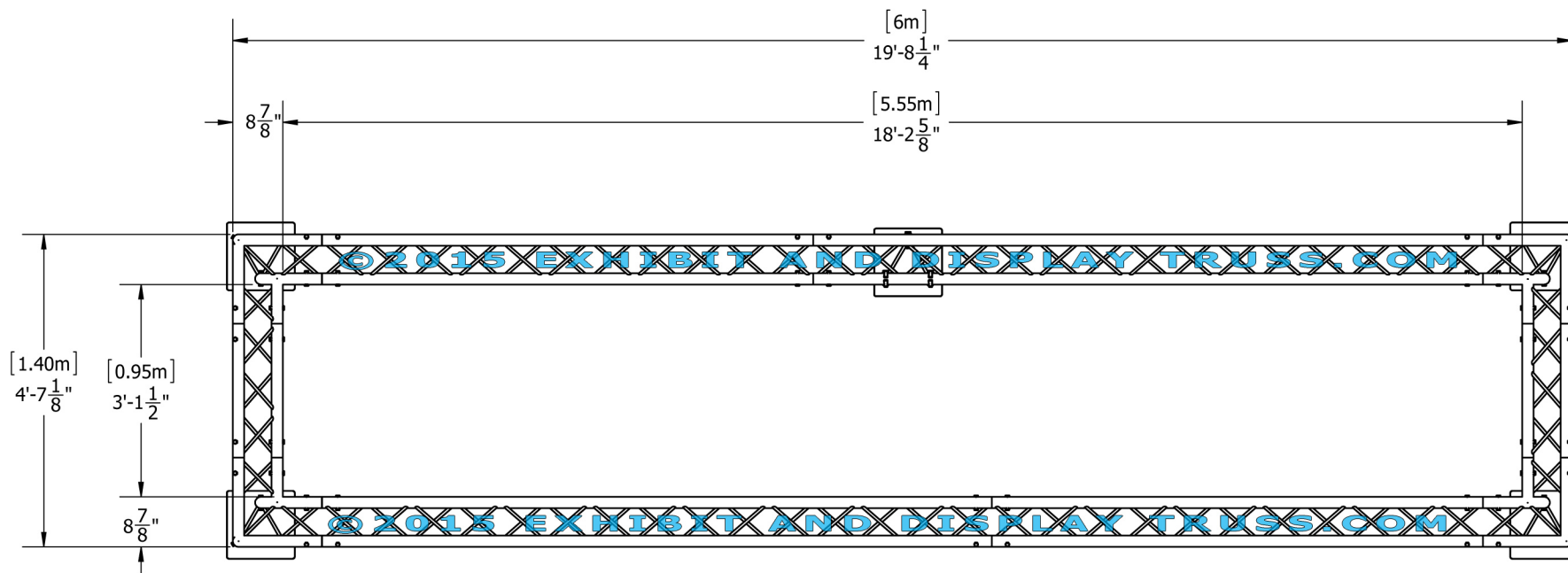
**EXPLODED VIEW**

ITEM NO.	PART NUMBER	DESCRIPTION	QTY.
①	EDT10-BP3	Tri Base Plate (square)	5
②	EDT10-T0.6	0.6m Tri Truss	2
③	EDT10-T2.0	2.0m Tri Truss	5
④	EDT10-T2.2	2.2m Tri Truss	2
⑤	EDT10-T3.0	3.0m Tri Truss	2
⑥	EDT10-T3W90L	3 Way 90° Junction "Left"	2
⑦	EDT10-T3W90R	3 Way 90° Junction "Right"	2
⑧	EDT10-EHC1	Extender Hook Clamp	1
⑨	EDT10-EHC4	Extender Hook Clamp	2

# KIT: B23-103

10" Wide Aluminum Truss. 2" Chords with 1/2" Webs

©2015 EXHIBIT AND DISPLAY TRUSS.COM

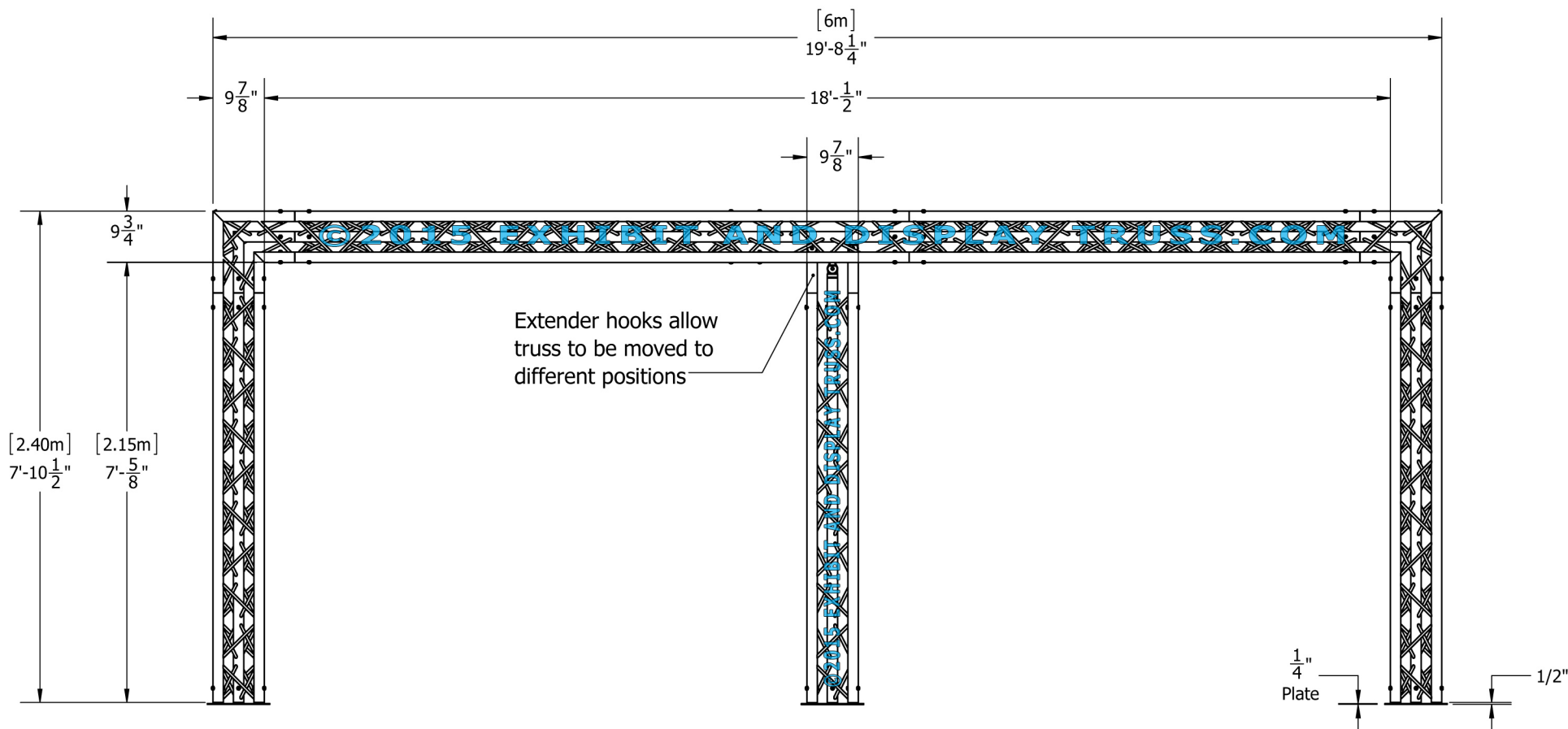


**Top View**  
Units: Feet & Inches  
[Meters]

# KIT: B23-103

10" Wide Aluminum Truss. 2" Chords with 1/2" Webs

©2015 EXHIBIT AND DISPLAY TRUSS.COM



Front View  
Units: Feet & Inches  
[Meters]

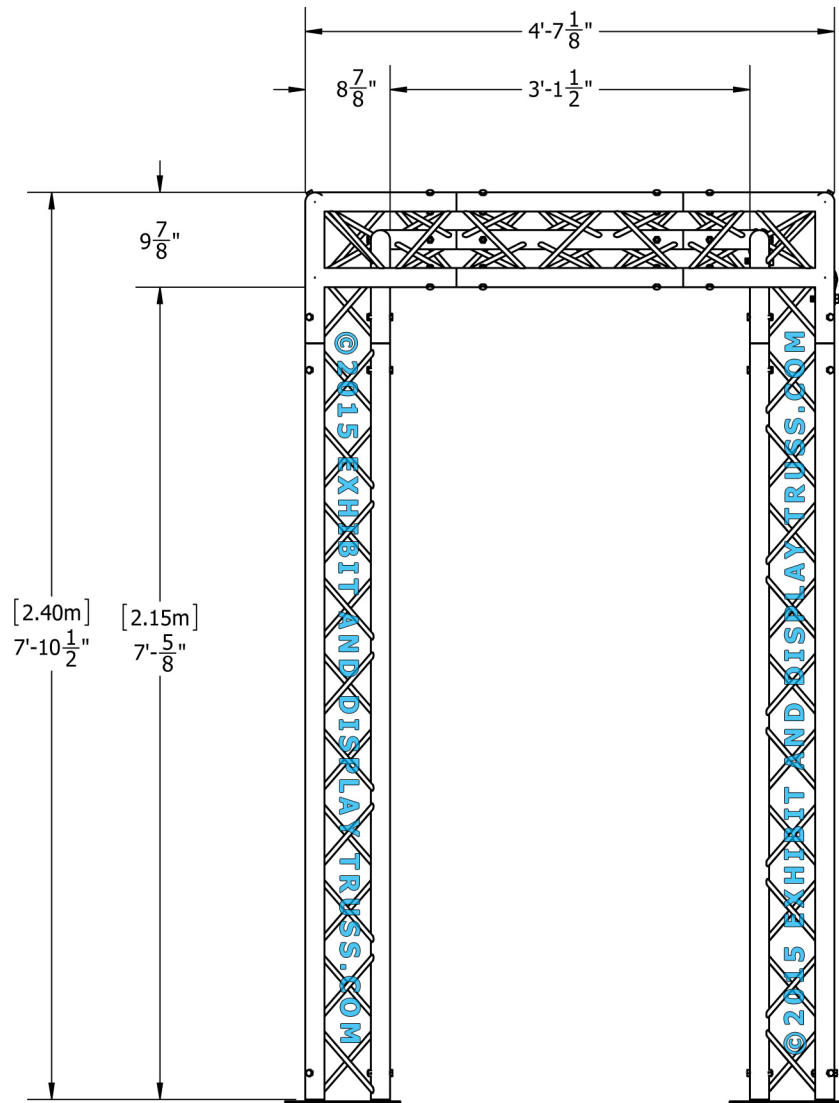
Toll Free: 855-323-4866  
Email: [info@exhibitanddisplaytruss.com](mailto:info@exhibitanddisplaytruss.com)

[ExhibitAndDisplayTruss.com](http://ExhibitAndDisplayTruss.com)

# KIT: B23-103

10" Wide Aluminum Truss. 2" Chords with 1/2" Webs

©2015 EXHIBIT AND DISPLAY TRUSS.COM



Side View  
Units: Feet & Inches  
[Meters]