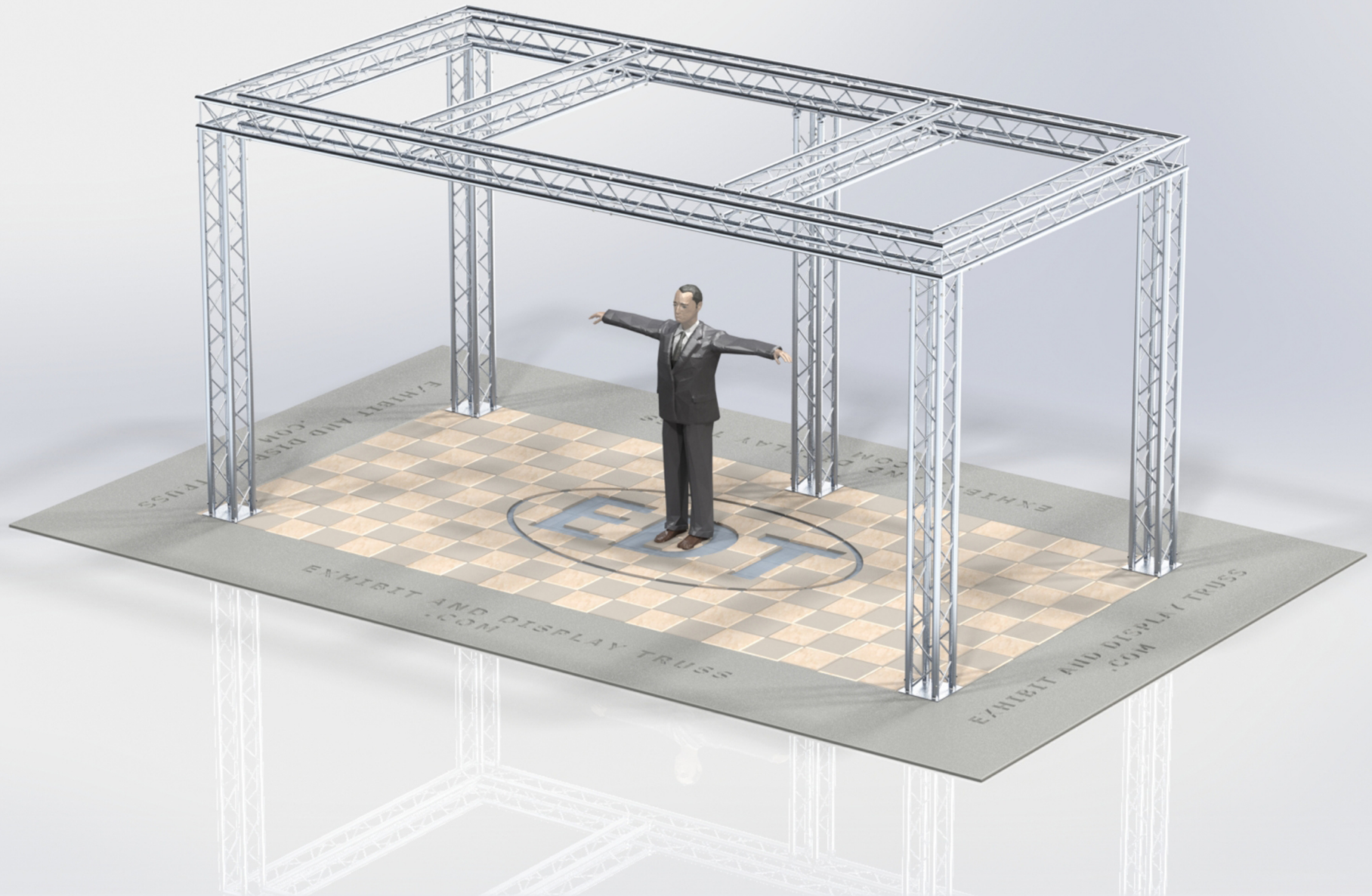


**KIT: B28-104**

**10" Wide Aluminum Truss. 2" Chords with 1/2" Webs**

©2015 EXHIBIT AND DISPLAY TRUSS.COM



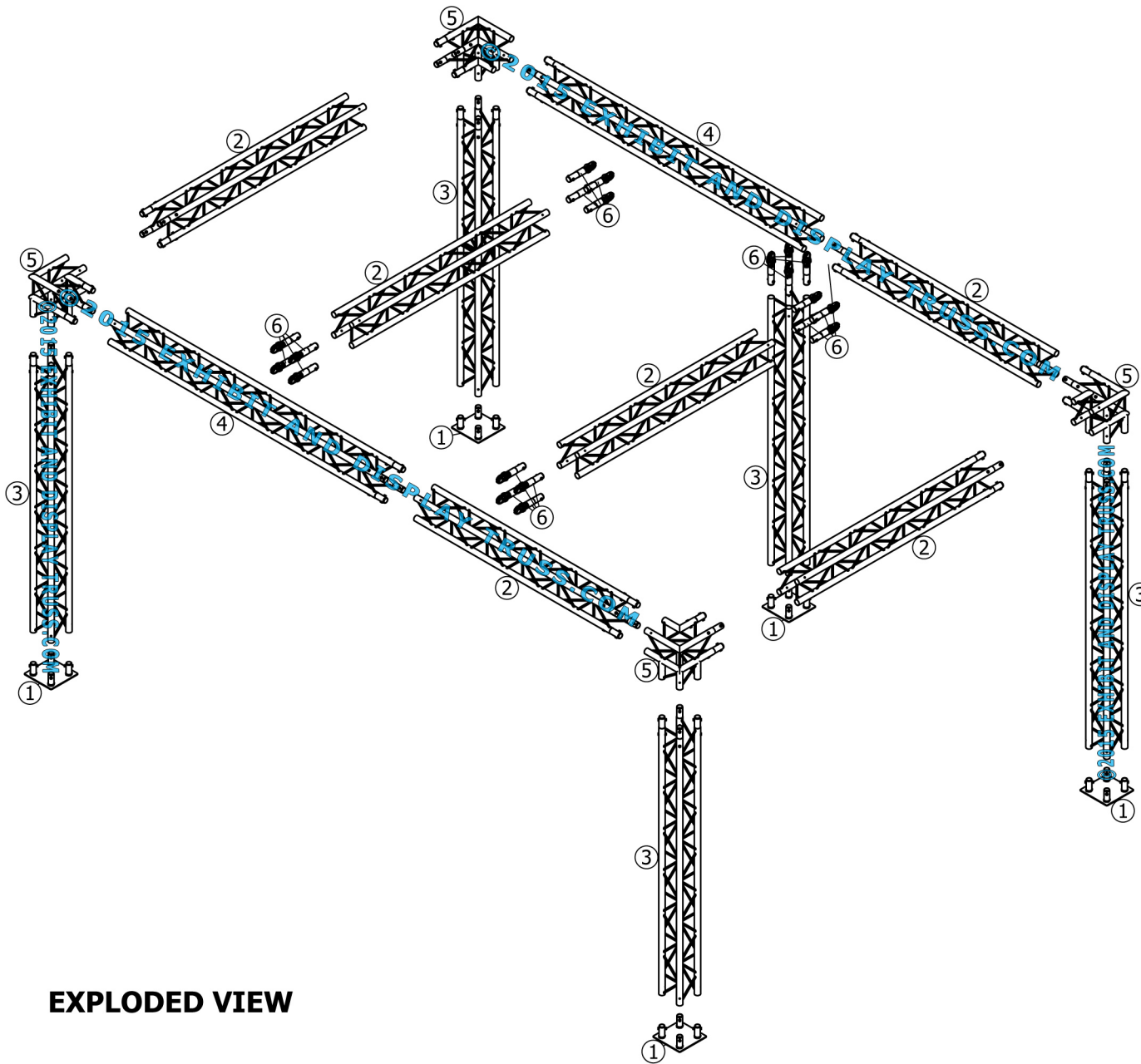
**Toll Free: 855-323-4866**  
**Email: [info@exhibitanddisplaytruss.com](mailto:info@exhibitanddisplaytruss.com)**

**[ExhibitAndDisplayTruss.com](http://ExhibitAndDisplayTruss.com)**

# KIT: B28-104

10" Wide Aluminum Truss. 2" Chords with 1/2" Webs

©2015 EXHIBIT AND DISPLAY TRUSS.COM



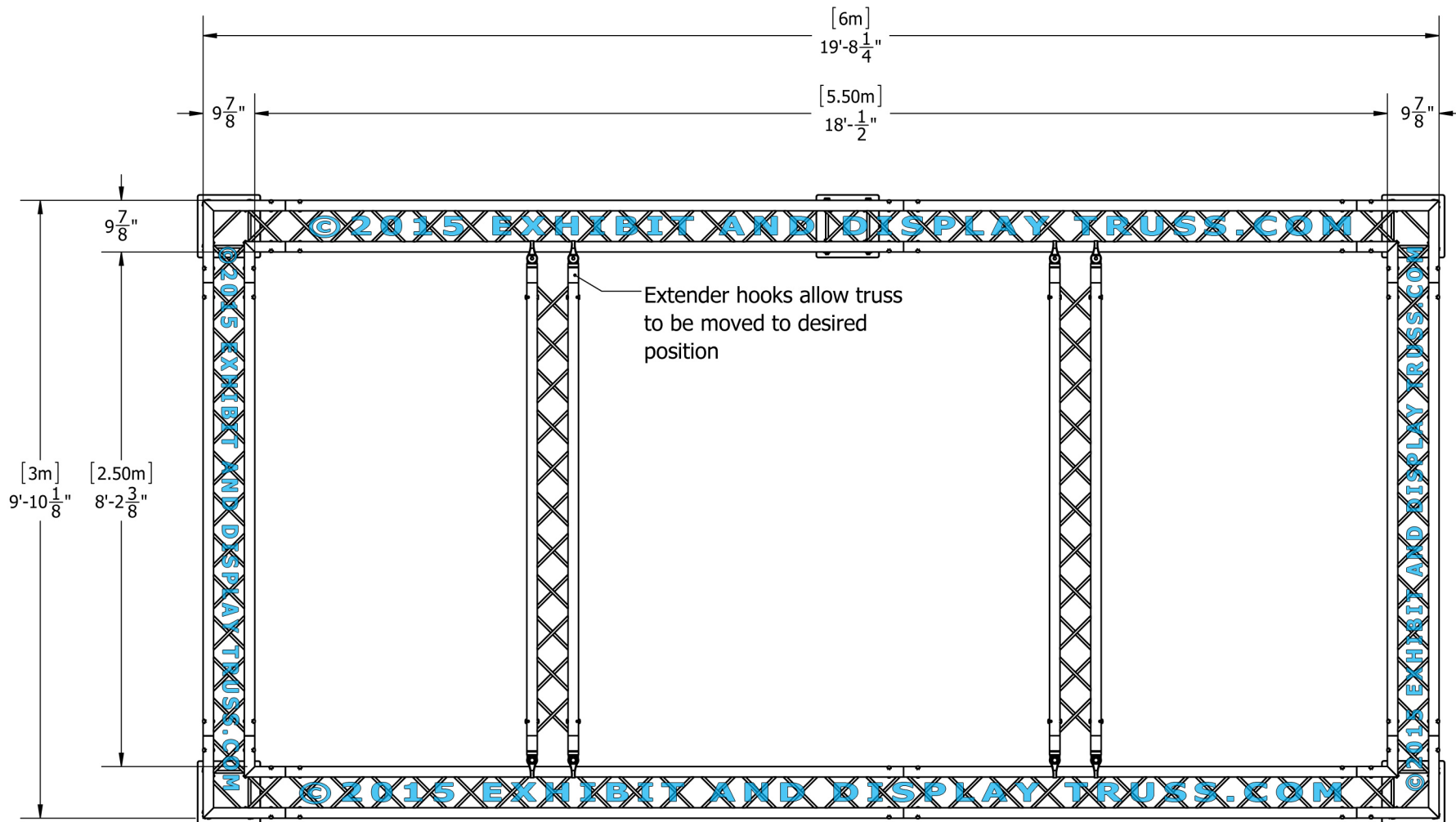
**EXPLODED VIEW**

ITEM NO.	PART NUMBER	DESCRIPTION	QTY.
①	EDT10-BP4	Box Base Plate	5
②	EDT10-B2.2	2.2m Box Truss	6
③	EDT10-B2.6	2.6m Box Truss	5
④	EDT10-B3.0	3.0m Box Truss	2
⑤	EDT10-B3W90	3 Way 90° Junction	4
⑥	EDT10-EHC1	Extender Hook Clamp	20

# KIT: B28-104

10" Wide Aluminum Truss. 2" Chords with 1/2" Webs

©2015 EXHIBIT AND DISPLAY TRUSS.COM

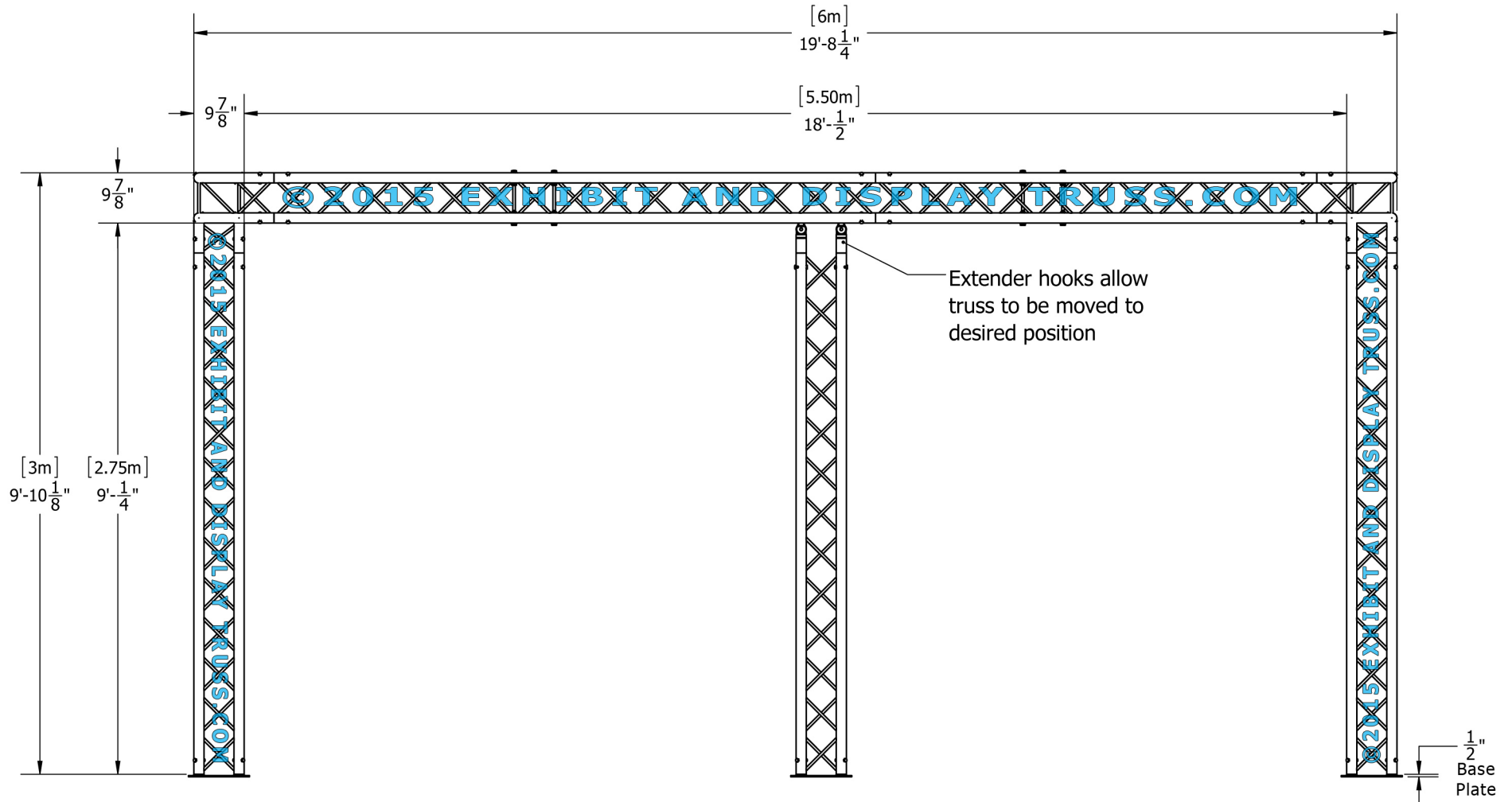


Top View  
Units: Feet & Inches  
[Meters]

# KIT: B28-104

10" Wide Aluminum Truss. 2" Chords with 1/2" Webs

©2015 EXHIBIT AND DISPLAY TRUSS.COM

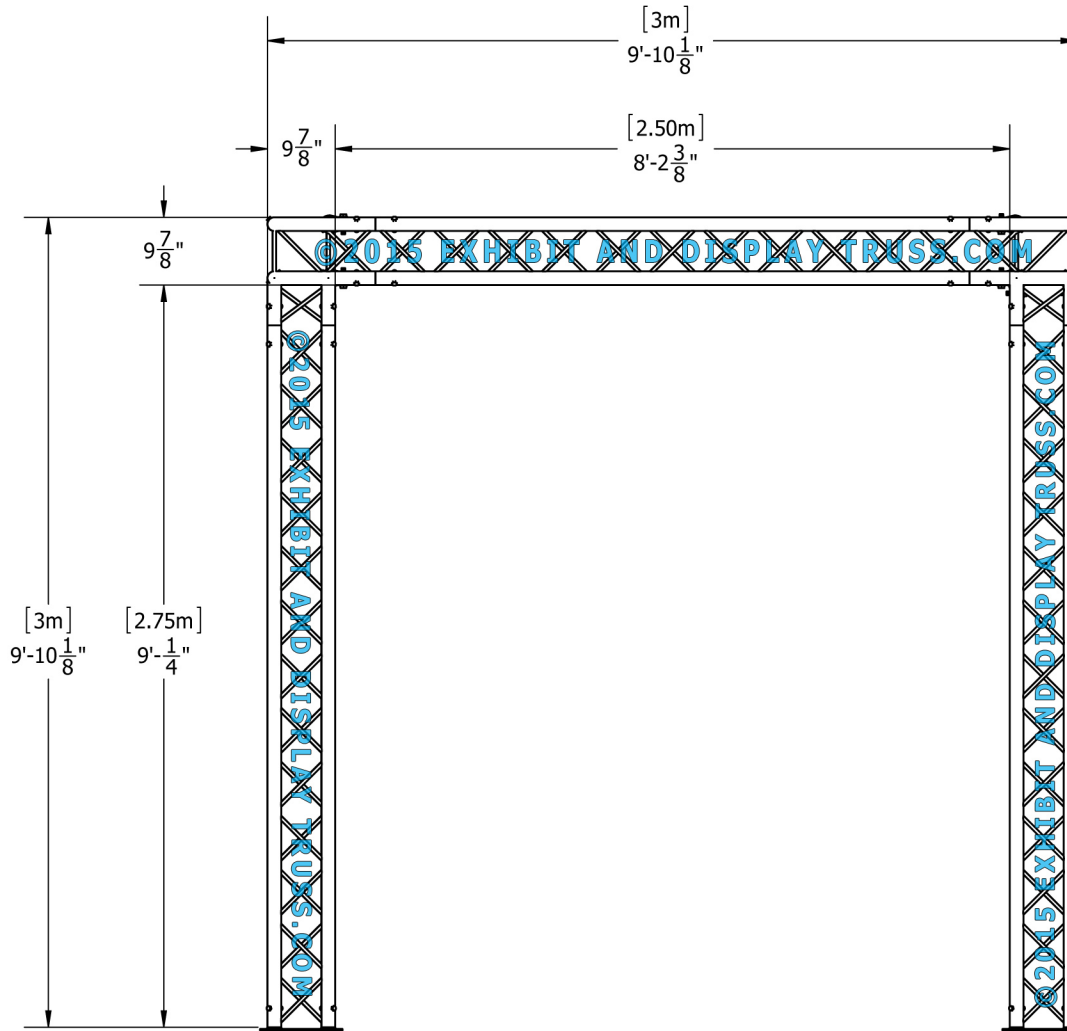


Front View  
Units: Feet & Inches  
[Meters]

# KIT: B28-104

10" Wide Aluminum Truss. 2" Chords with 1/2" Webs

©2015 EXHIBIT AND DISPLAY TRUSS.COM



Side View  
Units: Feet & Inches  
[Meters]

Toll Free: 855-323-4866  
Email: [info@exhibitanddisplaytruss.com](mailto:info@exhibitanddisplaytruss.com)

[ExhibitAndDisplayTruss.com](http://ExhibitAndDisplayTruss.com)