

KIT: FL-10

10" Wide Aluminum Truss. 2" Chords with 1/2" Webs

©2015 EXHIBIT AND DISPLAY TRUSS.COM



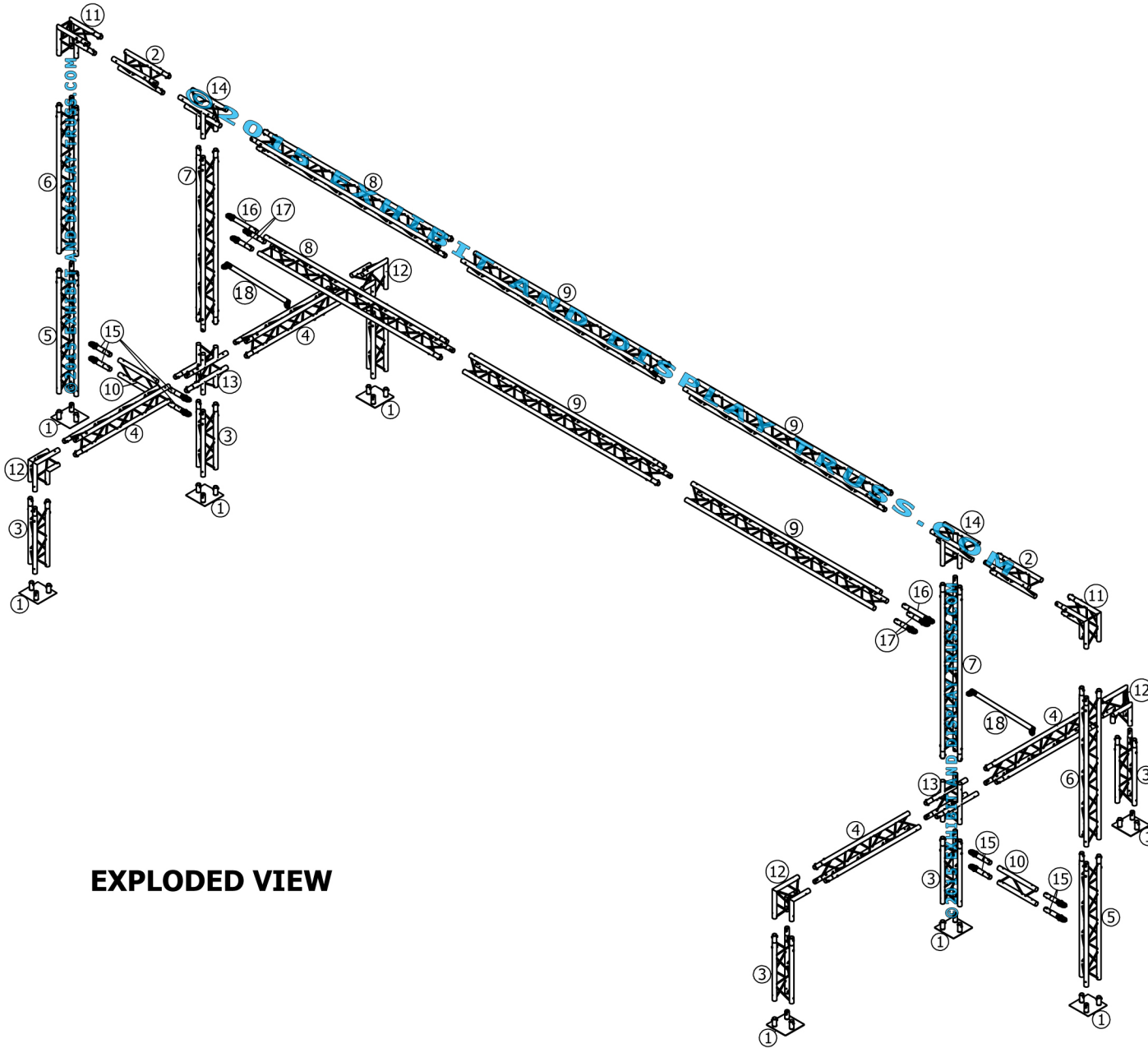
Toll Free: 855-323-4866
Email: info@exhibitanddisplaytruss.com

ExhibitAndDisplayTruss.com

KIT: FL-10

10" Wide Aluminum Truss. 2" Chords with 1/2" Webs

©2015 EXHIBIT AND DISPLAY TRUSS.COM



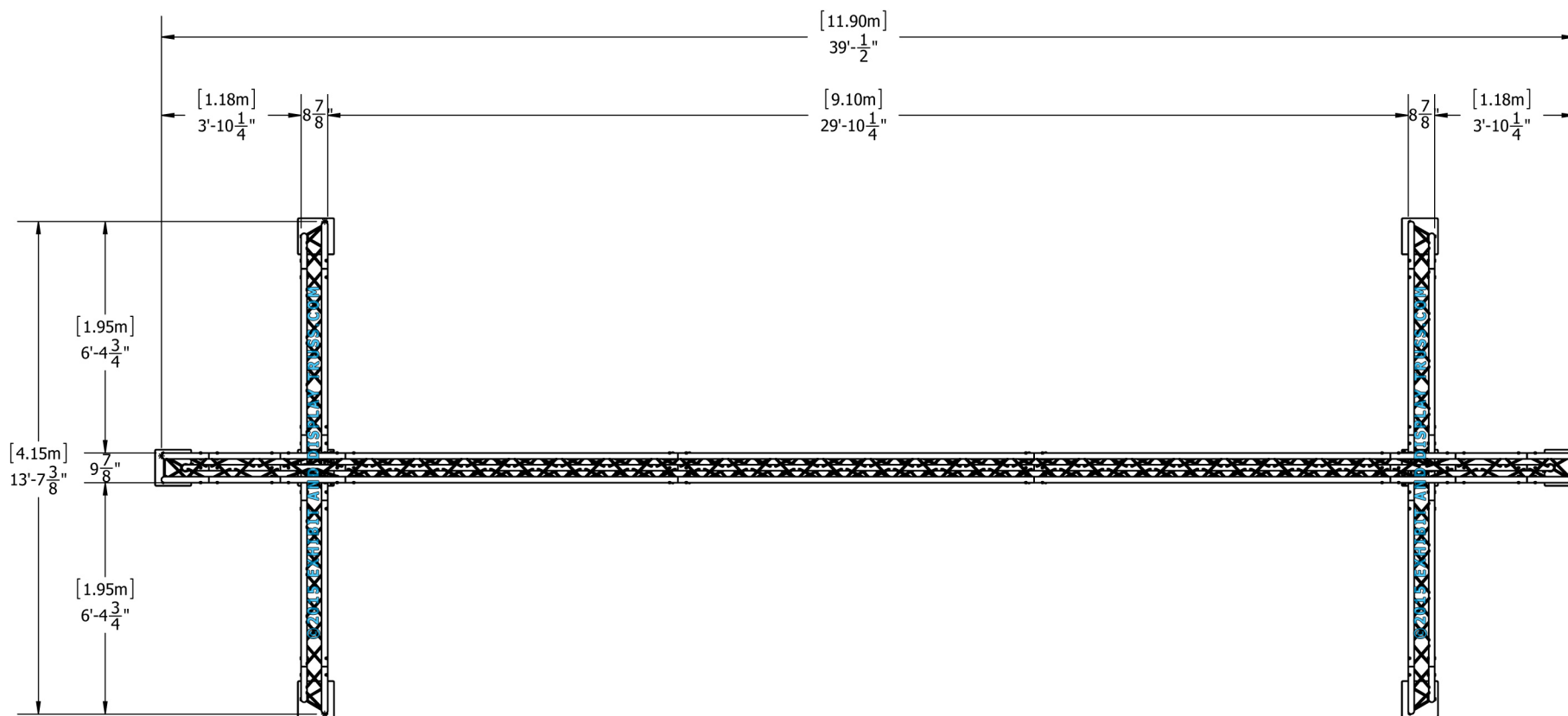
EXPLODED VIEW

ITEM NO.	PART NUMBER	DESCRIPTION	QTY.
①	EDT10-BP3	Tri Base Plate (square)	8
②	EDT10-T0.6	0.6m Tri Truss	2
③	EDT10-T0.8	0.8m Tri Truss	6
④	EDT10-T1.4	1.4m Tri Truss	4
⑤	EDT10-T1.6	1.6m Tri Truss	2
⑥	EDT10-T1.95	1.95m Tri Truss	2
⑦	EDT10-T2.2	2.2m Tri Truss	2
⑧	EDT10-T2.8	2.8m Tri Truss	2
⑨	EDT10-T3.0	3.0m Tri Truss	4
⑩	EDT10-L0.6	0.6m Ladder Truss	2
⑪	EDT10-T2W90A	2 Way 90° Junction Apex In	2
⑫	EDT10-T2W90	2 Way 90° Junction Apex Up/Down	4
⑬	EDT10-T4WX	4 Way 90° "X" Junction Apex Up/Down	2
⑭	EDT10-T3WTA	3 Way 90° "T" Junction Apex Down	2
⑮	EDT10-EHC4	Extender Hook Clamp	8
⑯	EDT10-EHC5	Extender Hook Clamp	2
⑰	EDT10-EHC1	Extender Hook Clamp	4
⑱	EDT2-STB6	6' Single Tube Brace	2

KIT: FL-10

10" Wide Aluminum Truss. 2" Chords with 1/2" Webs

©2015 EXHIBIT AND DISPLAY TRUSS.COM

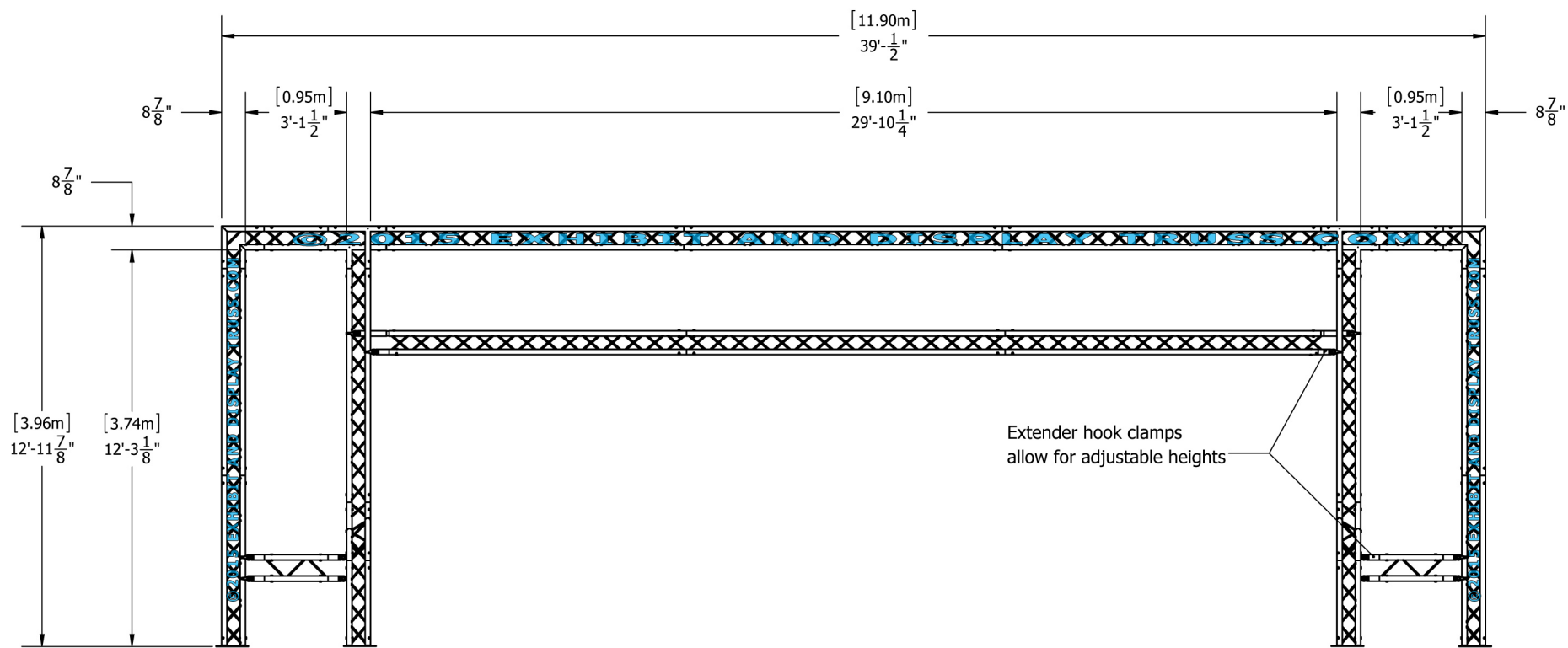


Top View
Units: Feet & Inches
[Meters]

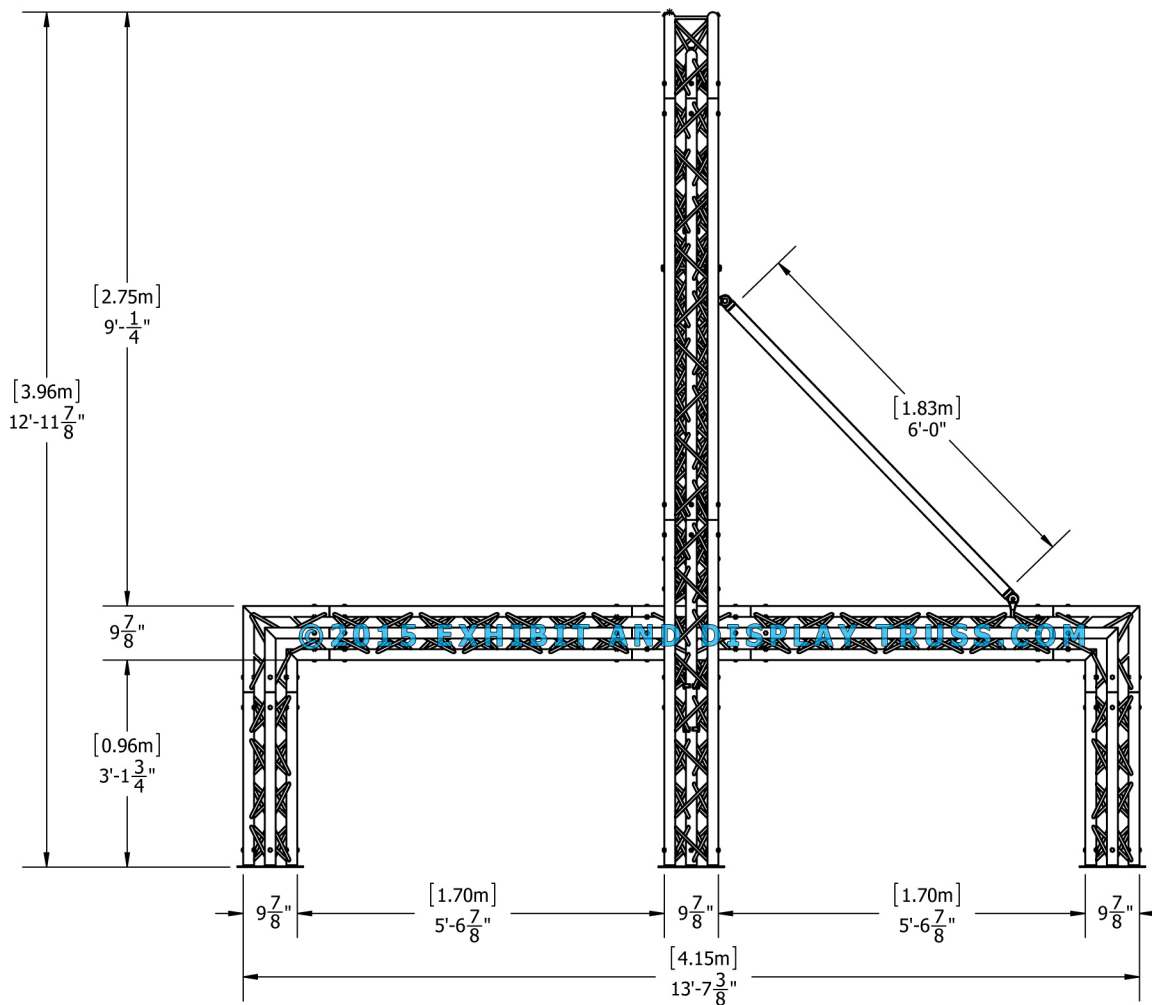
KIT: FL-10

10" Wide Aluminum Truss. 2" Chords with 1/2" Webs

©2015 EXHIBIT AND DISPLAY TRUSS.COM



Front View
Units: Feet & Inches
[Meters]



Side View
Units: Feet & Inches
[Meters]